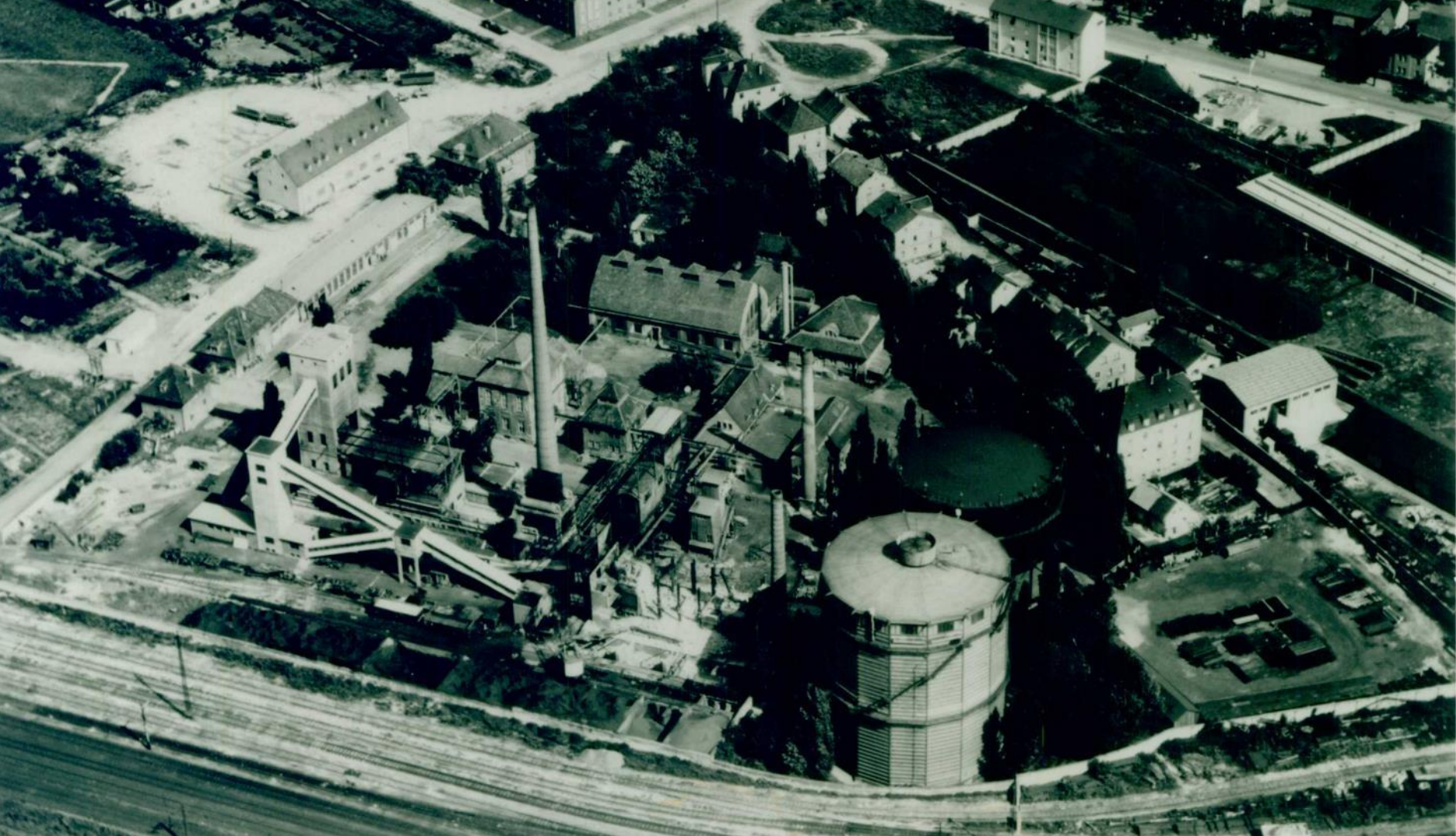




REWAG

Welcome!

der Versorger.
REWAG





REWAG At A Glance

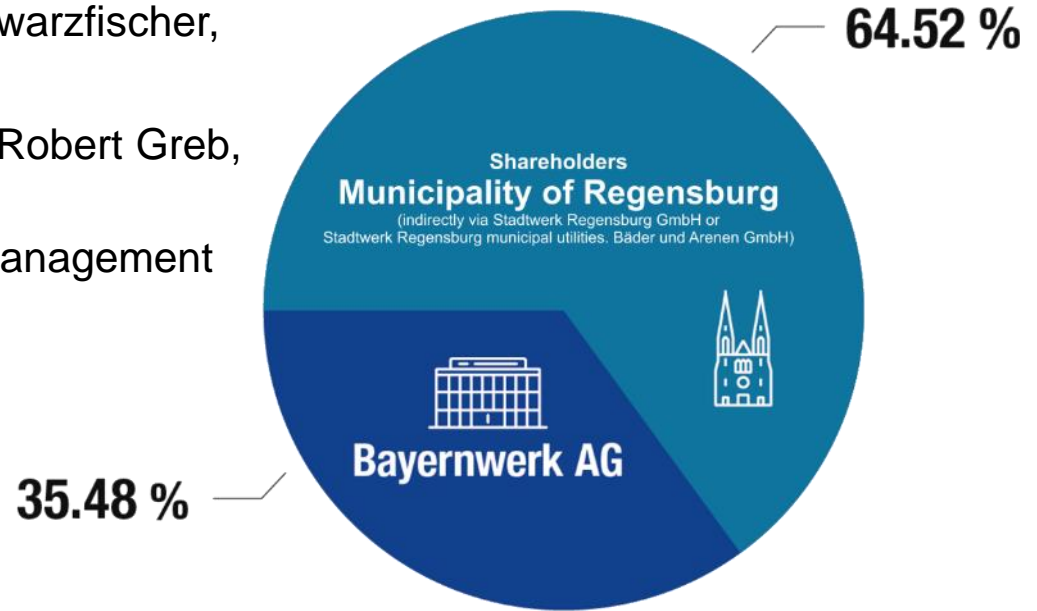
- Of the 160.000 city residents and the 193.000 Regensburg district population REWAG supplies
 - electricity to **130.000** customers
 - natural gas to **25.000** customers
 - drinking water to **30.000** customers (185.000 people)
 - heat to **1.300** customers

- 473 staff members and 28 trainees

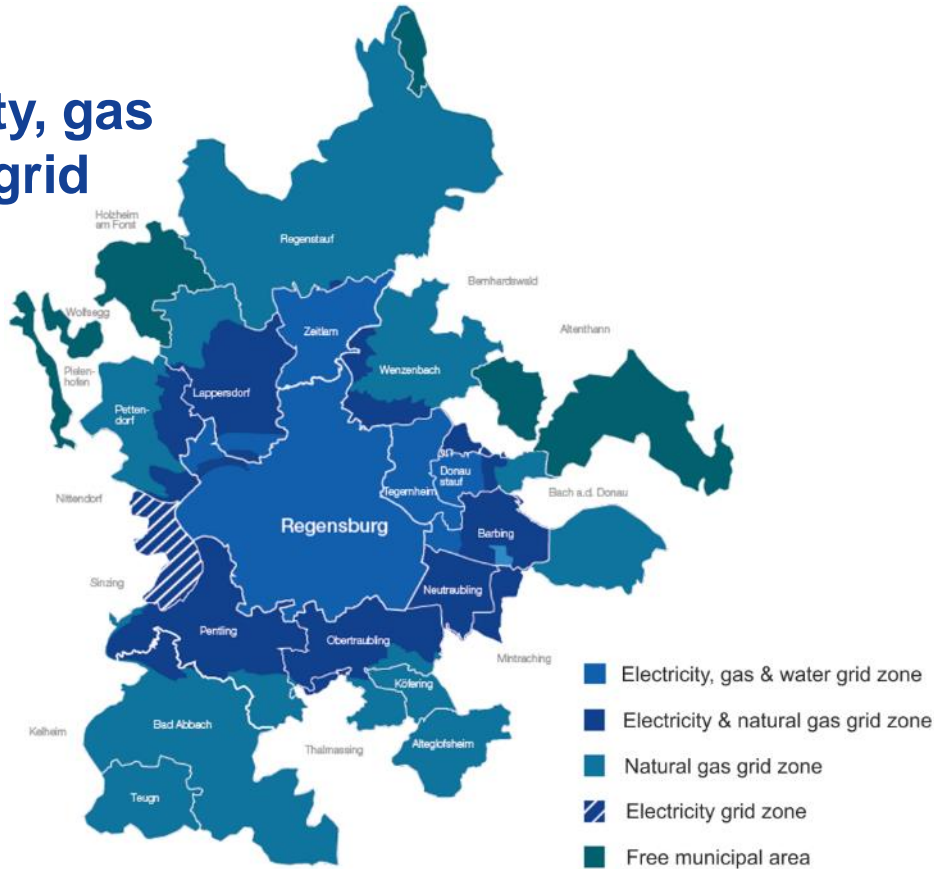
- 567 million euros in sales (2023)

Corporate structure

- Chair of the REWAG Supervisory Board:
Lady Mayoress Gertrud Maltz-Schwarzfischer,
- REWAG Management Board: Dr. Robert Greb,
Chair
- Sandra Wimmer, Member of the Management
Board



Electricity, gas & water grid zone



Electricity	
Grid length	4,350 kilometres
Domestic connections	47,731
Natural gas	
Grid length	1,527 kilometres
Domestic connections	31,393
Water	
Grid length	1,164 kilometres
Domestic connections	28,715
Heat	
Grid length	95 kilometres
Telecommunications	
Telecommunications cables	2,256 kilometres



From the region, serving the region

- More than **185.000 customers** enjoy safe and reliable daily drinking water supply from REWAG's more than 1,100 kilometres long distribution pipeline network.
- REWAG procures 80% of its water from the Sallern water extraction plant and 20% from Oberer Wöhrd waterworks, where some **11 million cubic metres** of drinking water are extracted every year.
- 12 elevated tanks with a total capacity of 39 million litres provide sufficient drinking water even during peak consumption times.



Challenges of water supply –

der Versorger.
REWAG



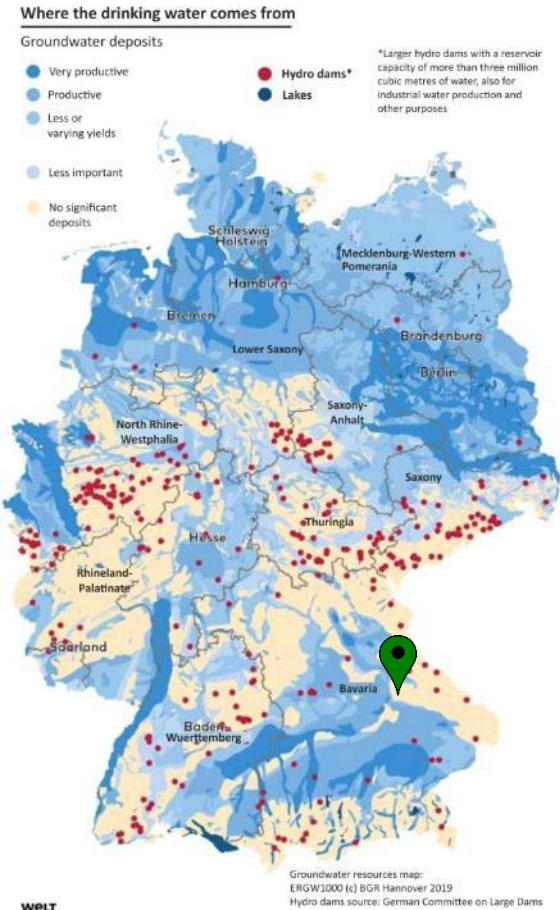
Water suppliers face major climatic challenges

1. Droughts

Extreme events such as droughts or floods threaten both water quantity and quality as well as extensive agriculture (Nitrat)

- Every year since 2003 (with the exception of 2013), Southern Germany has been showing **below-average groundwater recharge rates** (19 out of 20 years).
- Between 2011 and 2019, the groundwater recharge rate averaged only **81%** of the long-term average.
- Survey of 200 water suppliers on groundwater levels by the German Association for Gas and Water (DVGW):
 - 50% of **utilities companies are already** facing **fallen groundwater levels**

Source: Kliwa-Heft 21 (2017)

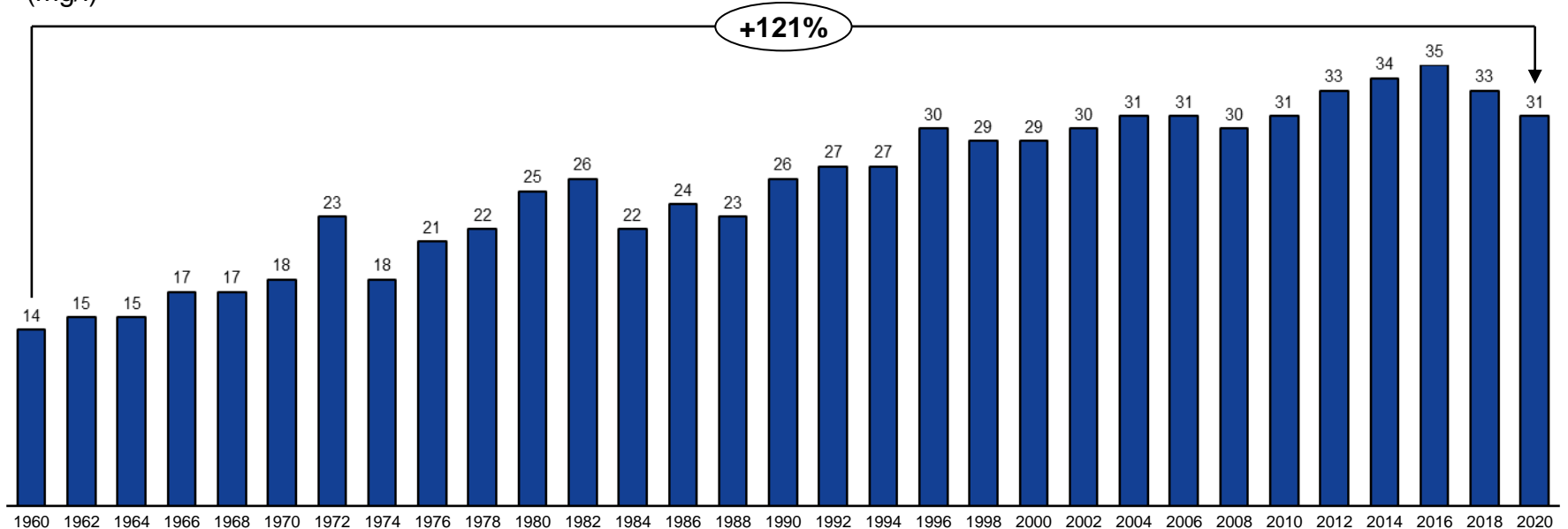


2. Flood disasters



3. Pollution: Nitrate levels in the Sallern drinking water have risen significantly in recent decades

1960 to 2020 nitrate content of the Sallern waterworks (mg/l)



REWAG'S reliability of supply is barely affected even during extreme weather phenomena

- A 2015 study conducted by the government of Upper Palatinate assessed REWAG'S level of **supply security** in the area of water as "**limited**".
- This is due to climatic and meteorological changes - in particular **extreme flood levels** - to be expected in the future.
- In this context, the location of REWAG's **water catchment areas and waterworks** at Oberer Wöhrd and in Sallern **in the floodplains** of the Danube and Regen rivers is seen as critical.

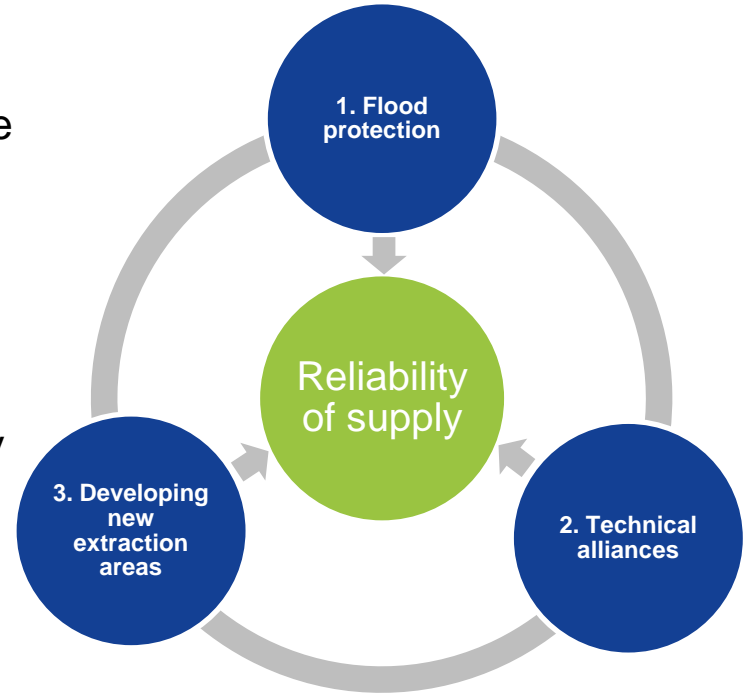
REWAG has developed a water strategy to secure an unrestricted long-term drinking water supply and is working consistently on its implementation.

REWAG's drinking water strategy

The three central pillars of REWAG's water strategy.









To secure the drinking water supply in the long term, our focus is on three main areas:

1. "**Flood protection**" is dedicated in particular to the protection of our existing extraction facilities.
2. In "**Technical alliances**" our focus is on cooperation with neighbouring water suppliers.
3. By **developing new extraction areas** we will secure the quality and quantity of the water supply in the long term.
4. We are continuously renewing our **network infrastructure**



Implementation

Overview - actions for implementing the water strategy

Field of action	Action	Status
▪ Flood protection	Oberer Wöhrd waterworks	 To be completed in 2024
	Sallern waterworks	 To commence in 2025
▪ Technical alliances	Naab-Donau-Regen special-purpose association	 Completed in November 2021
	Laber-Naab special-purpose association (13 Mio.)	 (Partial) completion by late 2024
▪ New extraction areas	Laub well	 In operation since mid-2022
	Marienhöhe well	 Acquired by REWAG in 2021
▪ Water reserves	Upper Palatinate Jura drinking water reserve	 Cooperation since 2017
▪ Network infrastructure modernisation	Investment ramp-ups	 Medium-term increase



Oberer Wöhrd and Sallern waterworks flood protection

Oberer Wöhrd

- To protect the Oberer Wöhrd water extraction plant, a new **240-metre-long protective wall** needs to be built.
- The project is currently being realised.
- Project amount: €700,000



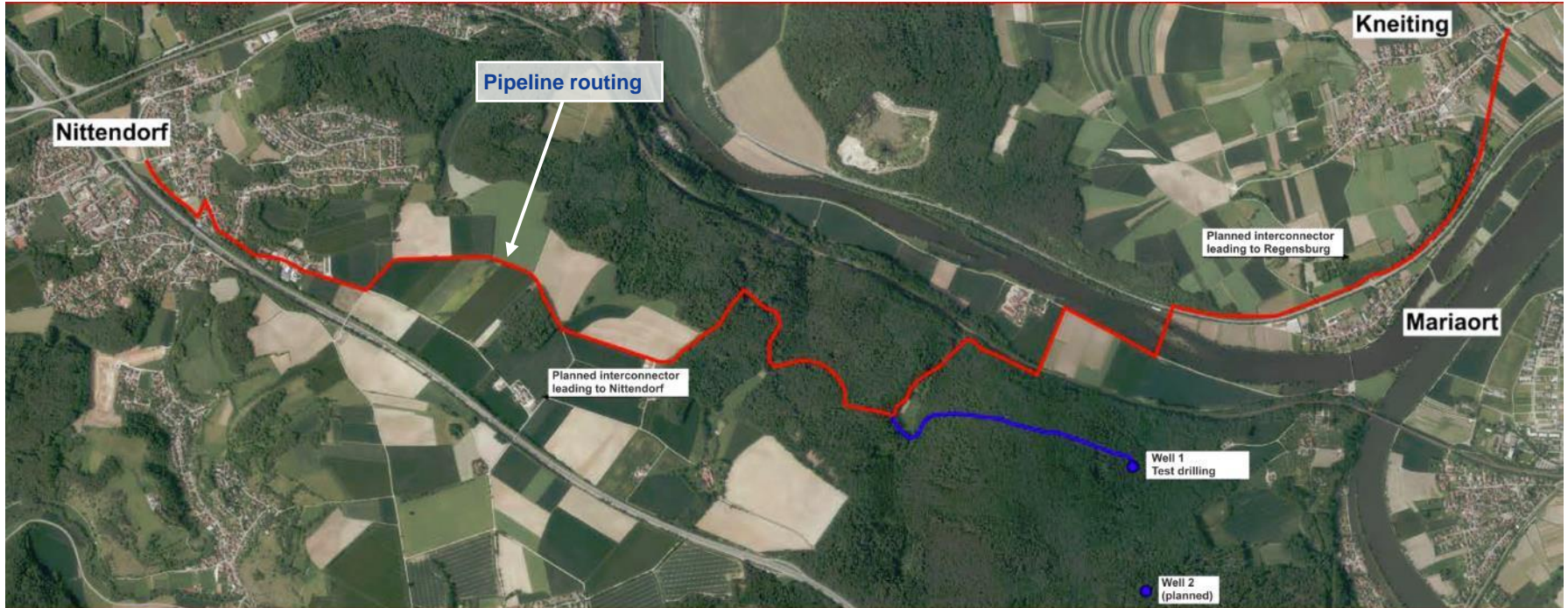
Sallern waterworks

- To protect the facility from extreme flooding, a new system consisting of a **flood protection dam, wall and infiltration trenches with a pumping station** is required.
- The planning has been finalised and **project implementation (retention area)** is scheduled to begin in **2024**.
- Project amount: €6,700,000

Site plan of technical connection with Naab-Donau-Regen water supply association (including connection with the Winzer water co-operative)



Planned pipeline routing in technical association with the Laber-Naab water supply association





Development of the Laub well

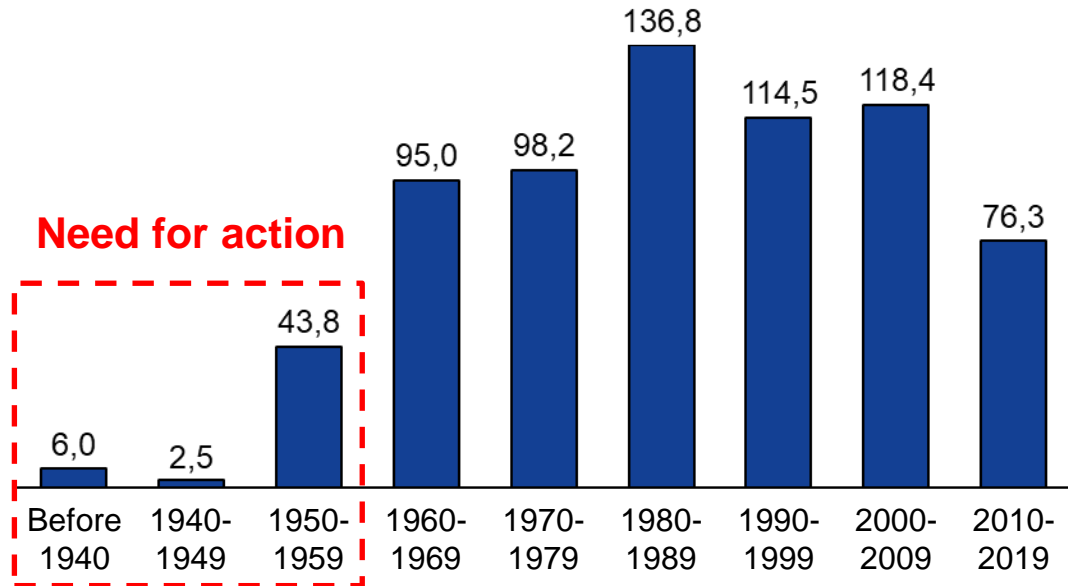
- Significant **improvement of the supply situation** in the northern supply area unaffected by **flooding**.
- **A water authority permit** for pumping 100 l/s or 1.5 million m³ per year has been granted.
- **Water reserve** is already designated, but needs to be extended.
- **Construction work** was completed in late 2023.
- The initial investments amount to **€5.5 million**, the medium-term investments up to **€8.1 million**.
- **Improving water quality** by reducing the nitrate content in drinking water (mixing effect: Marienhöhe 20.8 mg/l - Sallern 31 mg/l)



The water network renewal focuses on pipes that are now over 65 years old.

Age structure of the water supply network (main pipes)

(in kilometres of network length)

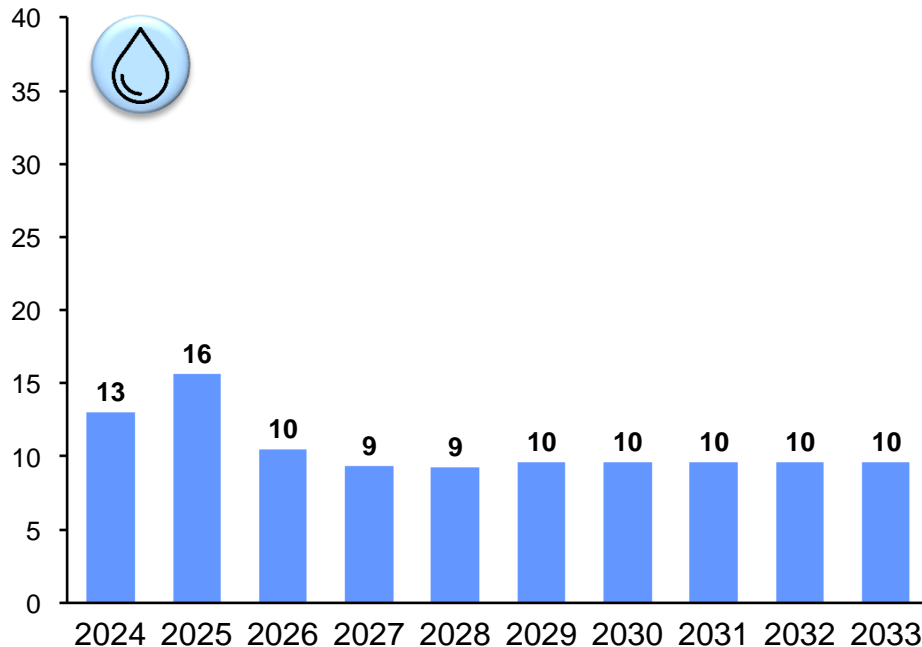


- Around €2 million p.a. will be required over a 10-year period to replace the outdated pipes.
- Once the measures required for unrestricted reliability of supply have been completed, these funds will be available in the defined investment budget of around €7 million p.a. in the medium-term.

Conclusion - REWAG'S strategy for the future

Drinking water Capital outlay

in million €



- Capital outlay: **approx. €106 million**
 - **Flood protection** for adaptation to the climate changes (approx. €10 million)
 - Interconnector (**approx. €1 million**)
 - Ongoing **renewal** of the **network infrastructure** (temporarily with a factor of 1.5 %)

Conclusion - REWAG'S strategy for the future

- By taking appropriate action, we undertake to ensure the **long-term quality and quantity** of the water supply for Regensburg and the surrounding region.
- Reliability of supply is guaranteed by **high investments** in flood protection, interconnectors, and new water extraction plants.
- Having already invested €35 million to date, a **further €30 million** will be required by the end of the decade.
- To cover the investments, the **continuous adjustment** of water prices will be necessary.

Although improving the reliability of supply comes at a price, it is a sensible and necessary approach in the long term.